



---

## ACE Vision Series:

**X3H410TS**



# User Manual

Revision 2.0

Revision Date: 3/16/2022



The information in this User's Manual has been carefully reviewed and is believed to be accurate. The vendor assumes no responsibility for any inaccuracies that may be contained in this document and makes no commitment to update or to keep current the information in this manual, or to notify any person or organization of the updates. Please Note: For the most up-to-date version of this manual, please see our website at [www.acecomputers.com](http://www.acecomputers.com).

Ace Computers reserves the right to make changes to the product described in this manual at any time and without notice. This product, including software and documentation, is the property of Ace Computers and/ or its licensors, and is supplied only under a license. Any use or reproduction of this product is not allowed, except as expressly permitted by the terms of said license.

IN NO EVENT WILL Ace Computers BE LIABLE FOR DIRECT, INDIRECT, SPECIAL, INCIDENTAL, SPECULATIVE OR CONSEQUENTIAL DAMAGES ARISING FROM THE USE OR INABILITY TO USE THIS PRODUCT OR DOCUMENTATION, EVEN IF ADVISED OF THE POSSIBILITY OF SUCH DAMAGES. IN PARTICULAR, SUPER MICRO COMPUTER, INC. SHALL NOT HAVE LIABILITY FOR ANY HARDWARE, SOFTWARE, OR DATA STORED OR USED WITH THE PRODUCT, INCLUDING THE COSTS OF REPAIRING, REPLACING, INTEGRATING, INSTALLING OR RECOVERING SUCH HARDWARE, SOFTWARE, OR DATA.

Any disputes arising between manufacturer and customer shall be governed by the laws of Cook County in the State of Illinois, USA. The State of Illinois, County of Cook shall be the exclusive venue for the resolution of any such disputes. Ace Computer's total liability for all claims will not exceed the price paid for the hardware product.

FCC Statement: This equipment has been tested and found to comply with the limits for a Class A digital device pursuant to Part 15 of the FCC Rules. These limits are designed to provide reasonable protection against harmful interference when the equipment is operated in an industrial environment. This equipment generates, uses, and can radiate radio frequency energy and, if not installed and used in accordance with the manufacturer's instruction manual, may cause harmful interference with radio communications. Operation of this equipment in a residential area is likely to cause harmful interference, in which case you will be required to correct the interference at your own expense.

The products sold by Ace Computers are not intended for and will not be used in life support systems, medical equipment, nuclear facilities or systems, aircraft, aircraft devices, aircraft/emergency communication devices or other critical systems whose failure to perform be reasonably expected to result in significant injury or loss of life or catastrophic property damage. Accordingly, Ace Computers disclaims any and all liability, and should buyer use or sell such products for use in such ultra-hazardous applications, it does so entirely at its own risk. Furthermore, buyer agrees to fully indemnify, defend and hold Ace Computers harmless for and against any and all claims, demands, actions, litigation, and proceedings of any kind arising out of or related to such ultra-hazardous use or sale.

Unless you request and receive written permission from Ace Computers, you may not copy any part of this document. Information in this document is subject to change without notice. Other products and companies referred to herein are trademarks or registered trademarks of their respective companies or mark holders.

Printed in the United States of America



# Preface

## About this Manual

This manual is written for professional system integrators and PC technicians. It provides information pertaining to EPEAT for the ACE Computers EPEAT registered Desktops.

## Notes

If you have any questions regarding this manual or computer system, please contact our support team through Ace Computers Support page <https://acecomputers.com/support/>. This manual may be periodically updated without notice.

Please check the Ace Computers website for possible updates to the manual revision level.



# Table of Contents

## Table of Contents

<b>Chapter 1 - Illustrated System Disassembly Instructions</b> .....	<b>5</b>
1. Data Storage Devices.....	6
2. Memory.....	8
3. Processor.....	9
4. Optical Drive.....	10
5. Motherboard.....	11
6. Expansion Card/Graphics Card.....	12
7. Power Supply Module.....	13
8. Chassis Cover.....	14
9. Batteries.....	15
10. Fans.....	16
11. External Power Cable.....	17
<b>Chapter 2 – Product Take-Back, End-Of-Life Processing, and E-Waste Program</b> .....	<b>18</b>
<b>Chapter 3 – Product Services</b> .....	<b>18</b>
3.1 Where to Get Replacement Components/Product Services.....	18
<b>3.2 Returning Merchandise for Service</b> .....	<b>18</b>

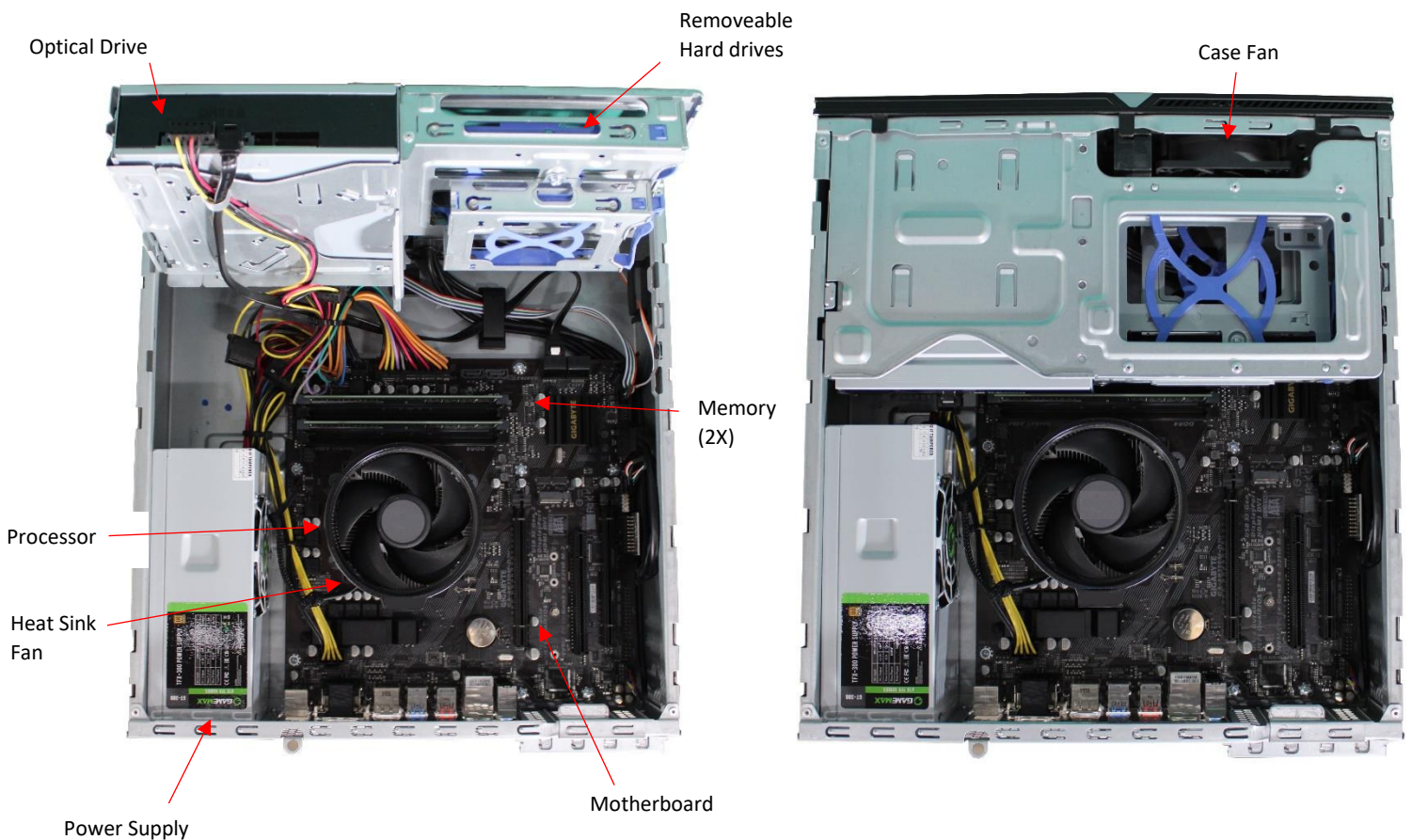
## Chapter 1 - Illustrated System Disassembly Instructions

Chapter 8 is intended to provide guidance to recyclers on the presence of materials and components at the product/family level, per Article 15 of the EU WEEE Directive 2012/19/EU. The provided information should also help direct recyclers to proper methods for removing parts and general product disassembly instructions. This Chapter also outlines specific substances, mixtures, and components that must be removed from any separately collected electronic waste component and shall be disposed or recovered in compliance with Directive 2008/98/EC.

Please note: All the illustrations in the below disassembly instructions are for demonstration only. The system and components shown in this section are a representative sample.

**CAUTION:** Always power off the system and unplug the power cord(s) first before disassembling the system!

### Representative Desktop Component Layout



# 1. Data Storage Devices

Location: Desktops utilize interchangeable storage. These storage hard drives are located as indicated in the photos below. Some desktops also have SSD storage, this type of storage can be found on the motherboard. It generally lays flat, parallel to the board, rather than at a right angle. Most common applications insert one end of the SSD into a slot on the motherboard while the alternate end is held in place with a small screw.

Type and number of fastenings: HDD = One (1) latch and four (6) Phillips screws, SSD = (1) Phillips screw.

Tools required: Screwdriver with PH2 bit.

## Procedure:

Step 1: Lift chassis carriage into the upright position.

Step 2: HDD (3.5") = Push the release button on the carrier. Swing the handle fully. Grasp the handle and pull the drive carrier out of its bay, once the drive carrier is out of the bay, the Phillips screws can be removed.

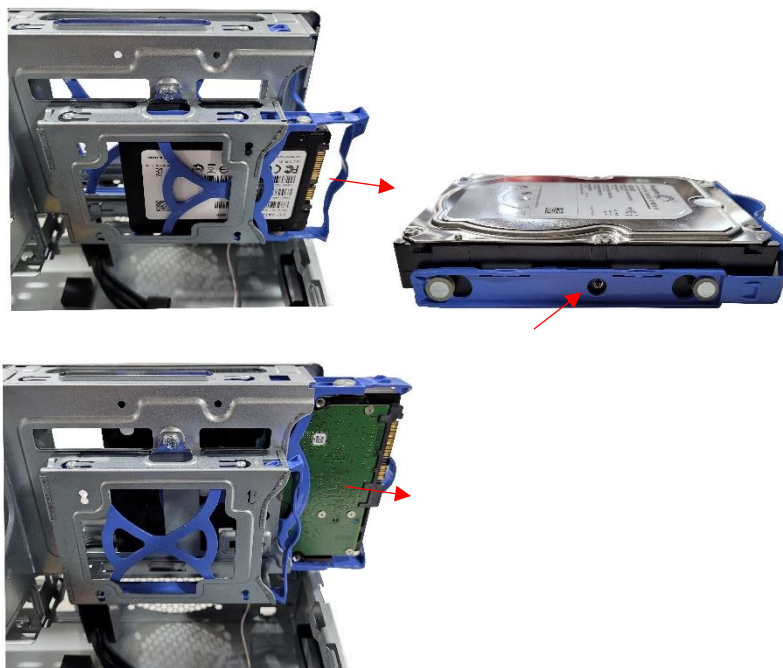
Step 3: SSD (2.5") = Identify the SSD on the motherboard, remove the screw, and pull straight back in a parallel position to remove the SSD from the slot on the motherboard.

Selective Treatment/Special Handling Per Annex VII, Directive 2012/19/EU: There are two printed circuit board present that are greater than 10 square centimeters, one within the HDD and one within SSD that must be removed separately from the data storage device and shall be disposed or recovered in compliance with Directive 2008/98/EC.

Step 1



Step 2



### Step 3



## 2. Memory

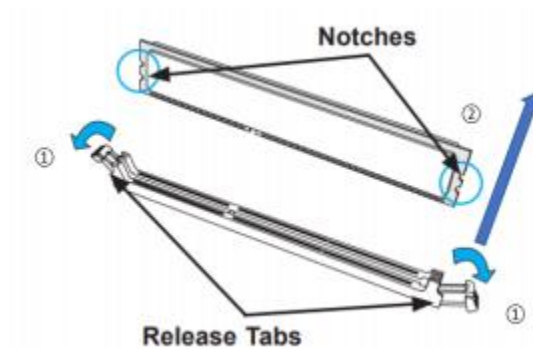
Location: Memory modules are found on the motherboard of the desktop, the number of memory modules may vary by unit configuration but are generally found in pairs of 2.

Type and number of fastenings: Two (2) latches per memory module.

Tools required: None.

Procedure: Press both release tabs on the ends of the memory module to unlock it. Once the module is loosened, remove it from the memory slot.

Selective Treatment/Special Handling Per Annex VII, Directive 2012/19/EU: The memory stick is a printed circuit board greater than 10 sq. cm and shall be disposed or recovered in compliance with EU Directive 2008/98/EC.





### 3. Processor

Location: The processor is found on the motherboard of the desktop. As shown in the photo below, the processor is located under the heat sink. There can only be one processor on the motherboard for this model. The processor could consist of a push-pin based Intel heatsink.

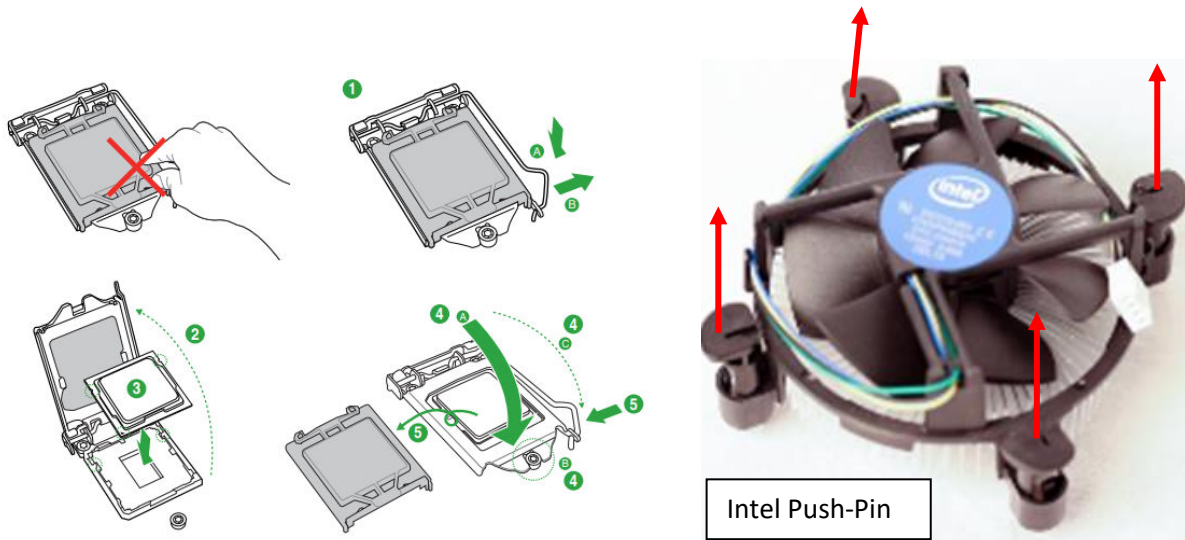
Type and number of fastenings: Push-Pin

Tools required: NA

Procedure: Intel Processor: Remove the push-pin from the base of the heatsink and lift the processor heatsink module off of the processor socket.

Selective Treatment/Special Handling Per Annex VII, Directive 2012/19/EU: The CPU does not contain any WEEE Directive Annex VII materials.

Any plastic components within the heatsink fan must be removed separately due to the presence of brominated flame retardants and shall be disposed or recovered in compliance with Directive 2008/98/EC.



## 4. Optical Drive

Location: The optical drive is located in the front top portion of the system.

Type and number of fastenings: 8 Phillips screws.

Tools required: Screwdriver with PH2 bit.

Procedure: Remove all 8 Phillips screws. Remove the optical drive from the casing by sliding upright.

Selective Treatment/Special Handling Per Annex VII, Directive 2012/19/EU: The optical drive contains a circuit board that is greater than 10 sq. cm and should be disposed or recovered in compliance with Directive 2008/98/EC.



## 5. Motherboard

Location: The motherboard is generally centrally located within the unit. Standard practice would be to remove all the components, peripherals, and add-ons from the motherboard before removal of the motherboard for processing.

Type and number of fastenings: 8 Phillips screws.

Tools required: Screwdriver with PH2 bit.

Procedure: Remove all 8 Phillips screws. Lift the motherboard from its base.

Selective Treatment/Special Handling Per Annex VII, Directive 2012/19/EU: The motherboard is a circuit board that is greater than 10 sq. cm and should be disposed or recovered in compliance with Directive 2008/98/EC.

A lithium battery resides on the motherboard. The battery must be removed separately from the motherboard and shall be disposed or recovered in compliance with Directive 2008/98/EC. Refer to section 9 for specific instructions on remove and disposal of LiON batteries.

- Handle used batteries carefully. Do not damage the battery in any way; a damaged battery may release hazardous materials into the environment. Do not discard a used battery in the garbage or a public landfill. Please comply with the regulations set up by your local hazardous waste management agency to dispose of your used battery properly.



## 6. Expansion Card/Graphics Card

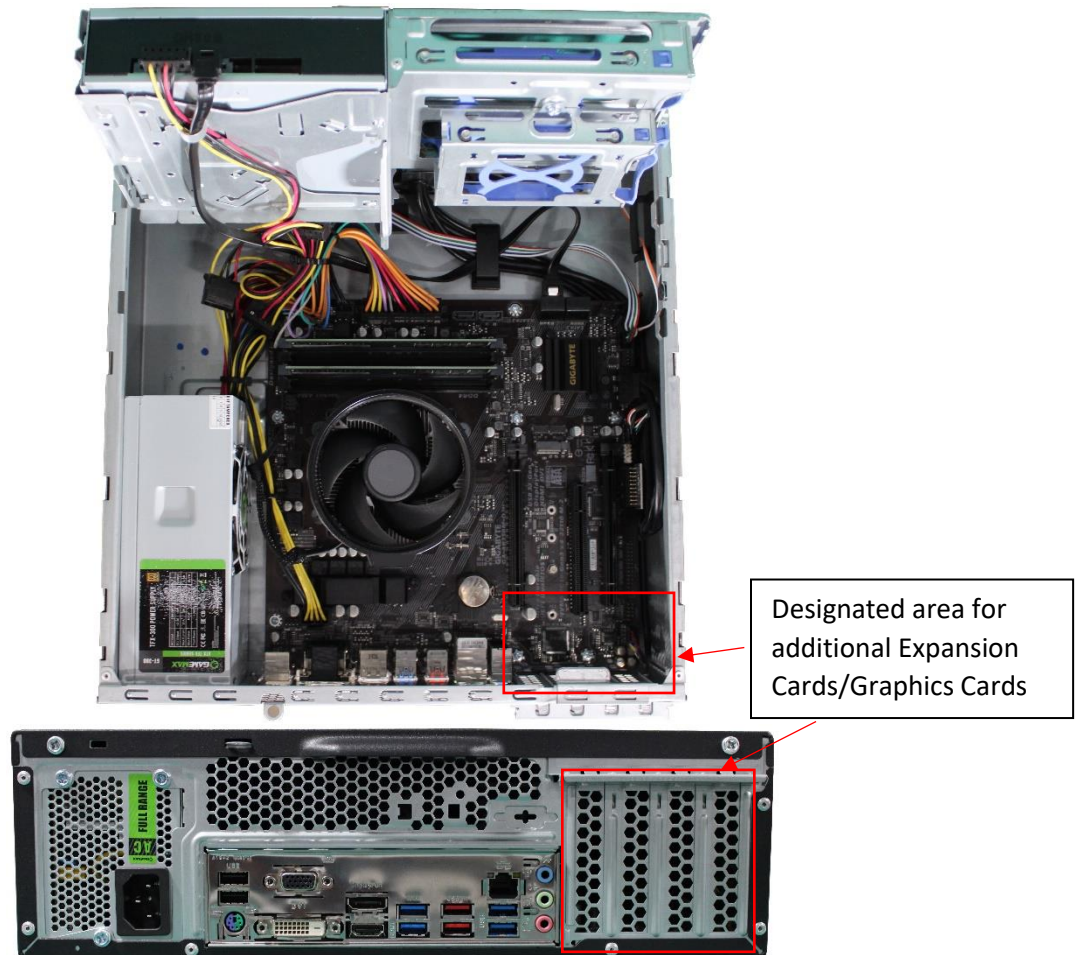
Location: Certain configurations of desktops may include expansion and/or graphics cards. These will be found in the lower right-hand corner of the motherboard. They're electrically connected to the motherboard and physically connected to the case.

Type and number of fastenings: Two (2) Phillips screws.

Tools required: Screwdriver with PH2 bit.

Procedure: Remove the Phillips screws from the rear of the case. Ensure the case cover is removed. Then you can disconnect the components from the motherboard.

Selective Treatment/Special Handling Per Annex VII, Directive 2012/19/EU: The expansion/graphics card is a circuit board greater than 10 sq.cm and shall be disposed or recovered in compliance with EU Directive 2008/98/EC.



## 7. Power Supply Module

Location: The power supply module is located in the back left hand corner.

Type and number of fastenings: Three (3) Phillips Screws per module.

Tools required: Screw Driver.

Procedure: Unplug the power cord from the power supply. To remove the power supply, remove the three exterior Phillips screws and all electrical connections and slide the unit out of the case.

Selective Treatment/Special Handling Per Annex VII, Directive 2012/19/EU: There is one printed circuit board present that is greater than 10 square centimeters within the power supply module that must be removed separately and shall be disposed or recovered in compliance with EU Directive 2008/98/EC.



## 8. Chassis Cover

Location: The chassis cover is located on the top of the case and is held in place with two Phillips screws.

Type and number of fastenings: Two (2) screws.

Tools required: Phillips screwdriver.

Procedure: Remove two screws and gently pull the handle backwards.

Selective Treatment/Special Handling Per Annex VII, Directive 2012/19/EU: None



## 9. Batteries

Location: The battery is located on the motherboard, see illustration below.

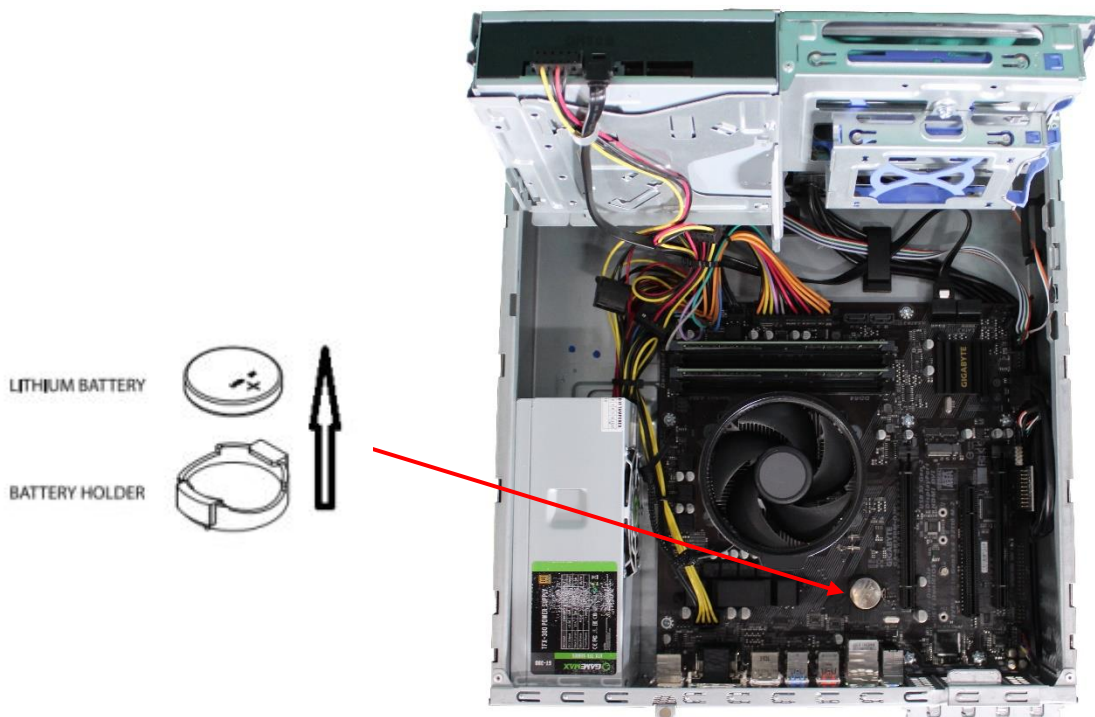
Type and number of fastenings: One (1) latch.

Tools required: None.

Procedure: Push aside the small clamp that covers the edge of the battery. When the battery is released, lift it out of the holder.

Selective Treatment/Special Handling Per Annex VII, Directive 2012/19/EU: A lithium battery resides on the motherboard. The battery must be removed from separately from the motherboard and shall be disposed or recovered in compliance with Directive 2008/98/EC. Removal instructions for the motherboard lithium battery are outlined below.

- Handle used batteries carefully. Do not damage the battery in any way; a damaged battery may release hazardous materials into the environment. Do not discard a used battery in the garbage or a public landfill. Please comply with the regulations set up by your local hazardous waste management agency to dispose of your used battery properly.



## 10. Fans

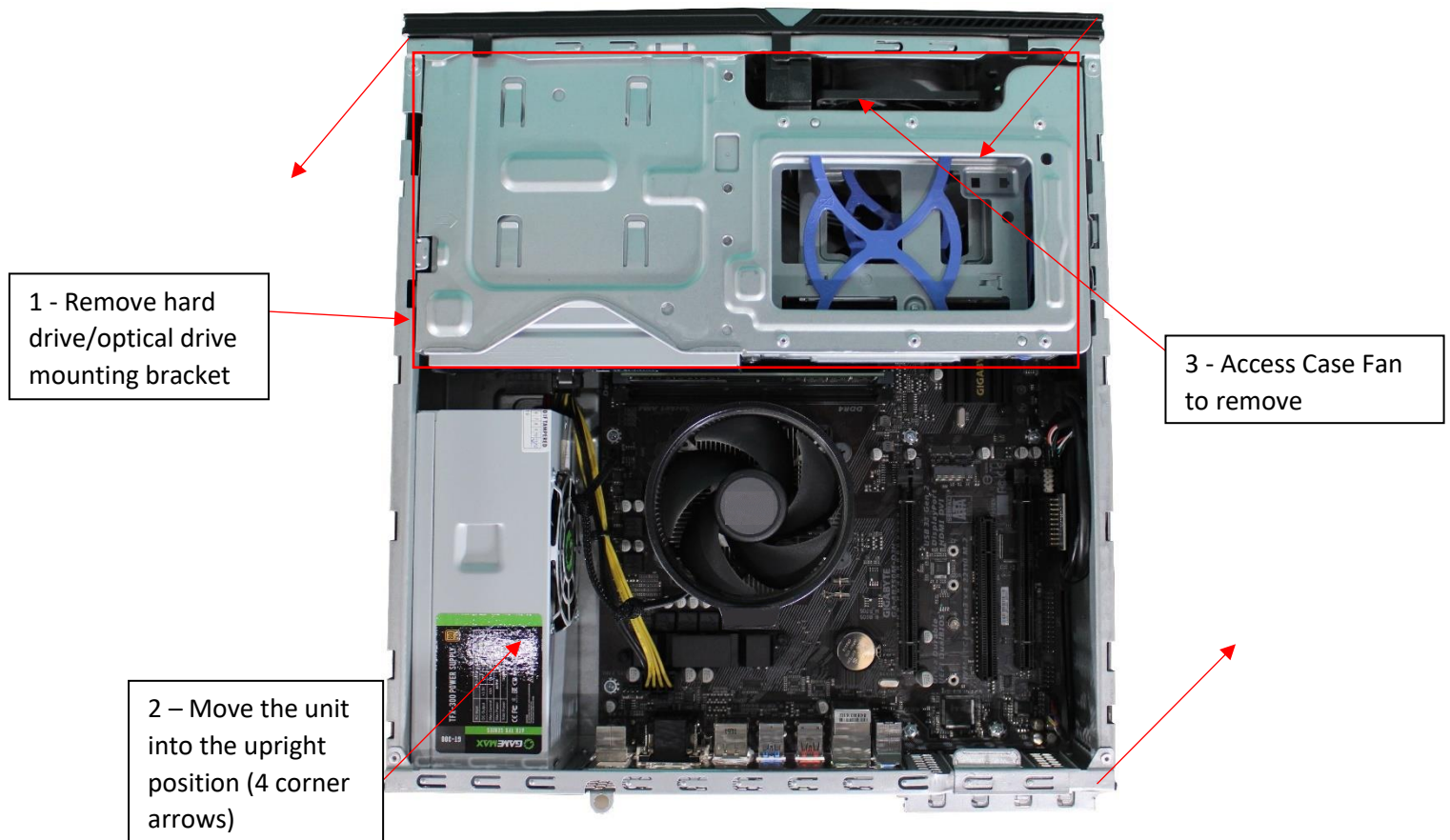
Location: The chassis fan is located underneath the hard drive/optical drive mounting bracket, in the top right hand corner, as noted in the photo below.

Type and number of fastenings: Four (4) Phillips Screws.

Tools required: Phillips Screwdriver.

Procedure: Release hard drive/optical drive mounting bracket and move into the upright position. This will allow access to the fan. Disconnect the fan wiring from the fan header on the motherboard. Then remove the four Phillips screws to remove the fan from the chassis.

Selective Treatment/Special Handling Per Annex VII, Directive 2012/19/EU: Any plastic components within the fan must be removed separately due to the presence of brominated flame retardants and shall be disposed or recovered in compliance with Directive 2008/98/EC.





## 11. External Power Cable

Location: To power the desktop a power cable is required. The inlet to the power cable is located on the power supply.

Type and number of fastenings: None, direct pressure connection method.

Tools required: None.

Procedure: Disconnect the external power cable from the main desktop assembly.

Selective Treatment/Special Handling Per Annex VII, Directive 2012/19/EU: Any external electrical cables must be removed separately and shall be disposed or recovered in compliance with Directive 2008/98/EC.



## Chapter 2 – Product Take-Back, End-Of-Life Processing, and E-Waste Program

Ace Computers offers a nationwide take-back service for proper end-of-life management of EPEAT-registered and Non-EPEAT registered products via Ace Computers and partnered with an R2-certified recycling facility.

For additional information and steps to take regarding our Product Take-Back, End-of-Life Processing, and E-Waste Program, please visit our website at <https://acecomputers.com/company/sustainability/> under the EPEAT Take-Back/EOL/E-Waste Program Tab.

## Chapter 3 – Product Services

### 3.1 Where to Get Replacement Components/Product Services

If you need replacement parts or product service for your system, for self-replacement or for on-site replacement, please visit <https://acecomputers.com/support/> and fill out the Ace Computers Support Request form. If phone assistance is needed please call our Support Line 847-952-6999.

**Note:** Most parts/product services are available for at least 5 years after the date of sale. Replacement components at a minimum cover the following: power supply, fans, hard drives, memory, CPU, PCB assemblies, memory and all hardware.

### 3.2 Returning Merchandise for Service

Upon completion of the Ace Computers Support Request Form, indicated in Section 1.5, an Ace Computers Team Member will reach out to further assist with your technical questions. If it is determined that the best course of action is an inhouse repair at Ace Computers, the service technician will help facilitate the process of returning the server for repair.